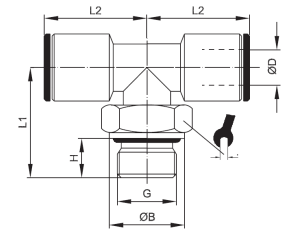
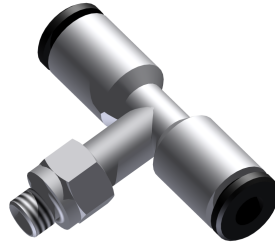



T-Verschraubung drehbar rotary tee parallel adaptor



Betriebstemperatur	-20°C bis +70°C	operating temperature	-20°C up to +70°C
Betriebsdruck	max. 16bar	operating pressure	max. 16bar
Werkstoff	Gehäuse Messing (Ms58) vernickelt Dichtung aus NBR silikonfrei Spannzange aus Edelstahl 1.4404 Druckring aus Kunststoff schwarz	material	body brass (Ms58) nickel-plated silicon-free NBR seals stainless steel clamp 1.4404 black plastic thrust ring

ØD [mm]	G	ØB [mm]	H [mm]	L1 [mm]	L2 [mm]	 [mm]
4	M5	8,0	4,0	16,5	19,0	9,0
4	G1/8	13,0	6,0	20,0	20,0	13,0
4	G1/4	16,0	8,0	24,0	20,0	13,0
6	G1/8	13,0	6,0	20,0	21,5	13,0
6	G1/4	16,0	8,0	24,0	21,5	13,0
8	G1/8	13,0	6,0	20,0	23,5	13,0
8	G1/4	16,0	8,0	24,0	23,5	13,0
8	G3/8	20,0	9,0	25,5	23,5	13,0
10	G1/4	16,0	8,0	24,0	26,5	16,0
10	G3/8	20,0	9,0	28,0	26,5	16,0
12	G1/4	16,0	8,0	30,5	29,0	16,0
12	G3/8	20,0	9,0	28,5	29,0	20,0
14	G1/2	25,0	11,0	33,5	32,0	20,0
14	G3/8	20,0	9,0	28,5	32,0	20,0

weitere Optionen und Zubehör auf Anfrage
more options and accessories on request