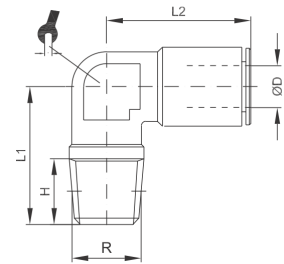
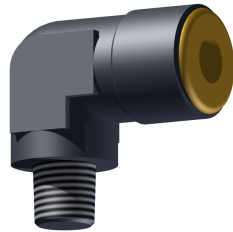



Hochdruckverschraubung, Winkeleinschraubverschraubung konisch high pressure, threaded elbow conical



Betriebstemperatur	-20°C bis +70°C	operating temperature	-20°C up to +70°C
Betriebsdruck	max. 150bar	operating pressure	max. 150bar
Werkstoff	Gehäuse Messing (Ms58) vernickelt Dichtung aus NBR Druckring aus Messing (Ms58) blank	material	body brass (Ms58) nickel-plated silicon-free NBR brass thrust ring (Ms58) polished

ØD [mm]	R	H [mm]	L1 [mm]	L2 [mm]	 [mm]
4,0	R1/8	7,5	17,5	21,5	10,0
4,0	M6x1	8,0	17,0	21,5	10,0
4,0	M8x1	8,0	17,0	21,5	10,0
4,0	M10x1	8,0	17,0	21,5	10,0
6,0	R1/8	7,5	20,0	24,0	14,0
6,0	M6x1	6,0	20,0	24,0	14,0
6,0	M8x1	8,0	20,0	24,0	14,0
6,0	M10x1	8,0	20,0	24,0	14,0

weitere Optionen und Zubehör auf Anfrage
more options and accessories on request