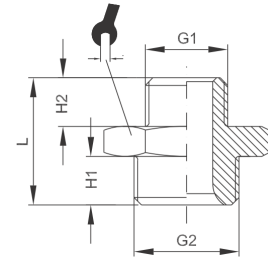
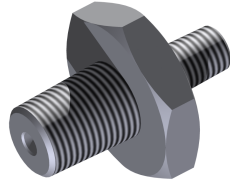


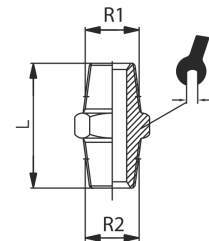
## Doppelnippel zylindrisch double nipple cyl.



<b>Betriebstemperatur</b>	max. +150°C	<b>operating temperature</b>	max. +150°C
<b>Betriebsdruck</b>	max. 60bar	<b>operating pressure</b>	max. 60bar
<b>Werkstoff</b>	Messing (Ms58) vernickelt bzw. blank Edelstahl	<b>material</b>	brass (Ms58) nickel-plated or polished stainless steel

Messing / brass

G1	G2	H1 [mm]	H2 [mm]	L [mm]	⌀ [mm]
M5	M5	4,0	4,0	11,5	8,0
M5	G1/8	6,0	4,0	14,5	14,0
G1/8	G1/8	6,0	6,0	16,5	14,0
G1/8	G1/4	8,0	6,0	19,0	17,0
G1/8	G3/8	9,0	6,0	20,0	19,0
G1/4	G1/4	8,0	8,0	21,0	17,0
G1/4	G3/8	9,0	8,0	22,0	19,0
G1/4	G1/2	10,0	8,0	23,5	24,0
G3/8	G3/8	9,0	9,0	23,0	19,0
G3/8	G1/2	10,0	9,0	24,5	24,0
G1/2	G1/2	10,0	10,0	25,5	24,0



Edelstahl / stainless steel

R1	R2	L [mm]	⌀ [mm]
R1/8	R1/8	17	13
R1/4	R1/4	25	15
R3/8	R3/8	26	20
R1/2	R1/2	34	23
R3/4	R3/4	36	30
R1	R1	43	36
R1 1/4	R1 1/4	48	45
R1 1/2	R1 1/2	48	50
R2	R2	56	62

**weitere Optionen und Zubehör auf Anfrage**  
more options and accessories on request