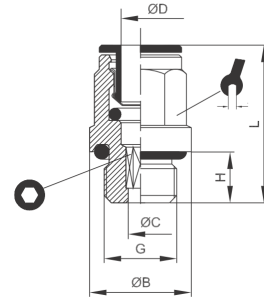
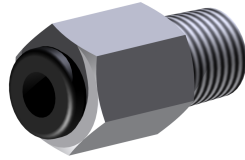


gerade Einschraubverschraubung straight male adaptor parallel



Betriebstemperatur	-20°C bis +70°C	operating temperature	-20°C up to +70°C
Betriebsdruck	max. 16bar	operating pressure	max. 16bar
Werkstoff	Gehäuse Messing (Ms58) vernickelt Dichtung aus NBR silikonfrei Spannzange aus Edelstahl 1.4404 Druckring aus Kunststoff schwarz	material	body brass (Ms58) nickel-plated silicon-free NBR seals stainless steel clamp 1.4404 black plastic thrust ring

ØD [mm]	G	ØB [mm]	ØC [mm]	H [mm]	L [mm]	⊙ [mm]	⌘ [mm]
3,0	M3	5,5	1,6	3,0	13,5	Ø5,5	1,5
3,0	M5	8,0	2,1	4,0	15,0	Ø6,5	2,0
4,0	M5	9,0	2,6	4,0	20,5	Ø9,0	2,5
4,0	M6	9,0	2,6	7,0	23,5	Ø9,0	2,5
4,0	M7	10,5	3,6	6,0	22,5	9,0	3,5
4,0	M8	12,0	2,6	7,0	24,5	10,0	2,5
4,0	G1/8	13,5	2,6	6,0	20,0	9,0	2,5
4,0	G1/4	17,0	2,6	8,0	21,0	9,0	2,5
5,0	M5	9,5	2,6	4,0	22,0	Ø9,5	2,5
5,0	G1/8	13,5	4,2	6,0	22,0	10,0	4,0
5,0	G1/4	17,0	4,2	8,0	22,0	10,0	4,0
6,0	M5	10,5	2,6	4,0	22,5	Ø10,5	2,5
6,0	M6	11,0	2,6	4,0	22,5	Ø11,0	2,5
6,0	M7	10,5	3,6	6,0	24,5	Ø10,5	3,5
6,0	G1/8	13,5	4,2	6,0	24,0	11,0	4,0
6,0	G1/4	17,0	4,2	8,0	24,0	11,0	4,0
6,0	G3/8	20,0	4,2	9,0	25,0	13,0	4,0
8,0	G1/8	12,8	5,2	6,0	26,5	13,0	5,0
8,0	G1/4	17,0	6,2	8,0	25,0	13,0	6,0
8,0	G3/8	20,0	6,2	9,0	25,0	13,0	6,0
8,0	G1/2	23,0	6,2	11,0	31,5	13,0	6,0
10,0	G1/8	13,5	5,2	6,0	29,0	16,0	5,0
10,0	G1/4	16,0	7,3	8,0	29,0	16,0	7,0
10,0	G3/8	21,0	8,3	9,0	29,5	16,0	8,0
10,0	G1/2	24,0	8,3	11,0	31,0	16,0	8,0
12,0	G1/4	16,0	7,3	8,0	31,5	18,0	7,0
12,0	G3/8	21,0	10,3	9,0	31,0	18,0	10,0
12,0	G1/2	24,0	10,3	11,0	31,5	18,0	10,0
14,0	G3/8	21,0	10,3	9,0	34,0	21,0	10,0
14,0	G1/2	25,0	12,3	11,0	34,5	21,0	12,0

weitere Optionen und Zubehör auf Anfrage
more options and accessories on request