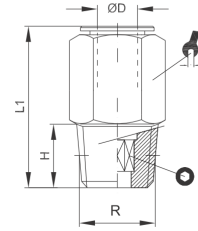
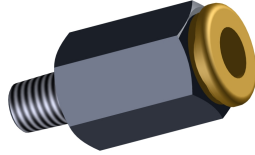


## Hochdruckverschraubung, gerade Einschraubverschraubung kon. high pressure, straight male adaptor conical



<b>Betriebstemperatur</b>	-20°C bis +70°C	<b>operating temperature</b>	-20°C up to +70°C
<b>Betriebsdruck</b>	max. 150bar	<b>operating pressure</b>	max. 150bar
<b>Werkstoff</b>	Gehäuse Messing (Ms58) vernickelt Dichtung aus NBR Druckring aus Messing (Ms58) blank	<b>material</b>	body brass (Ms58) nickel-plated silicon-free NBR brass thrust ring (Ms58) polished

ØD [mm]	R	H [mm]	L1 [mm]	⊙ [mm]	⌘ [mm]
4,0	R1/8	7,5	21,0	3,0	10,0
4,0	M6x0,75	6,0	23,0	2,5	10,0
4,0	M6x1	8,0	25,0	2,5	10,0
4,0	M8x1	8,0	22,0	3,0	10,0
4,0	M10x1	8,0	21,0	3,0	11,0
6,0	R1/8	7,5	24,0	4,0	12,0
6,0	M6x0,75	6,0	26,0	2,5	12,0
6,0	M6x1	8,0	28,0	2,5	12,0
6,0	M8x1	8,0	28,0	4,0	12,0
6,0	M10x1	8,0	24,0	4,0	12,0

**weitere Optionen und Zubehör auf Anfrage**  
more options and accessories on request