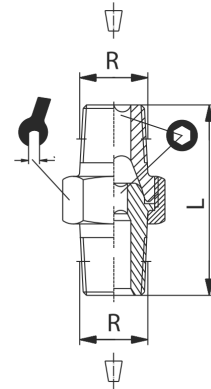
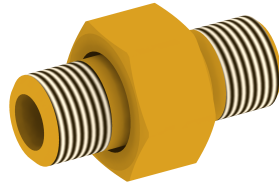




Doppelnippel lösbar – blank, kon. double nipple con. detachable



Betriebstemperatur	max. +150°C	operating temperature	max. +150°C
Betriebsdruck	max. 60bar	operating pressure	max. 60bar
Werkstoff	Messing (Ms58) vernickelt und blank	material	brass (Ms58) nickel-plated and polished

R	L	Ø		
[mm]	[mm]	[mm]	[mm]	[mm]
R1/8	27,0	5,3	15,0	5,0
R1/4	34,0	6,3	19,0	6,0
R3/8	36,0	8,5	22,0	8,0
R1/2	40,0	13,0	27,0	12,0
R3/4	52,0	15,0	36,0	14,0
R1	65,0	20,0	46,0	19,0
R1/8-R1/4	30,0	5,3	15,0	5,0
R1/4-R3/8	35,0	6,3	19,0	6,0

weitere Optionen und Zubehör auf Anfrage
more options and accessories on request