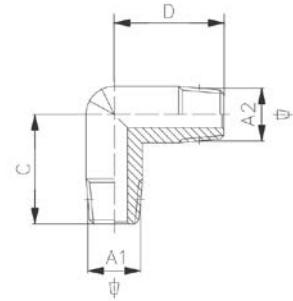


Winkelstück konisch
male elbow con.


Betriebstemperatur	-20°C bis +150°C	operating temperature	-20°C up to +150°C
Betriebsdruck	max. 100bar	operating pressure	max. 100bar
Werkstoff	Verschraubungen aus Edelstahl Dichtungen aus FKM	material	fittings made of stainless steel seals made of FKM

A1 [mm]	A2 [mm]	C [mm]	D [mm]
R1/8	R1/8	17,0	17,0
R1/4	R1/4	21,0	21,0
R3/8	R3/8	24,0	24,0
R1/2	R1/2	30,0	30,0

weitere Optionen und Zubehör auf Anfrage
more options and accessories on request