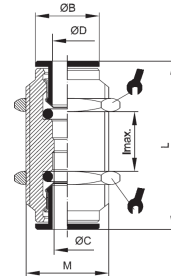
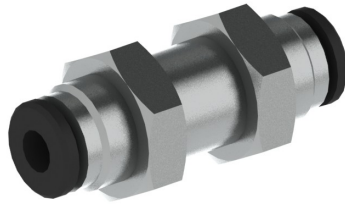



Schottverschraubung bulkhead union



Betriebstemperatur	-20°C bis +70°C	operating temperature	-20°C up to +70°C
Betriebsdruck	max. 16bar	operating pressure	max. 16bar
Werkstoff	Gehäuse Messing (Ms58) vernickelt Dichtung aus NBR silikonfrei Spannzange aus Edelstahl 1.4404 Druckring aus Kunststoff schwarz	material	body brass (Ms58) nickel-plated silicon-free NBR seals stainless steel clamp 1.4404 black plastic thrust ring

ØD [mm]	ØC [mm]	M [mm]	ØB [mm]	l _{max} [mm]	L [mm]	 [mm]
4,0	3,0	M10x1	8,0	15,0	31,5	13,0
5,0	4,0	M11x1	9,5	14,0	33,0	14,0
6,0	5,0	M14x1	11,0	11,0	33,5	17,0
8,0	7,0	M16x1	13,0	16,0	37,0	18,0
10,0	9,0	M17x1	15,0	19,5	39,5	20,0
12,0	11,0	M20x1	17,0	17,0	42,0	24,0
14,0	13,0	M22x1	20,0	21,0	46,0	25,0

weitere Optionen und Zubehör auf Anfrage
more options and accessories on request